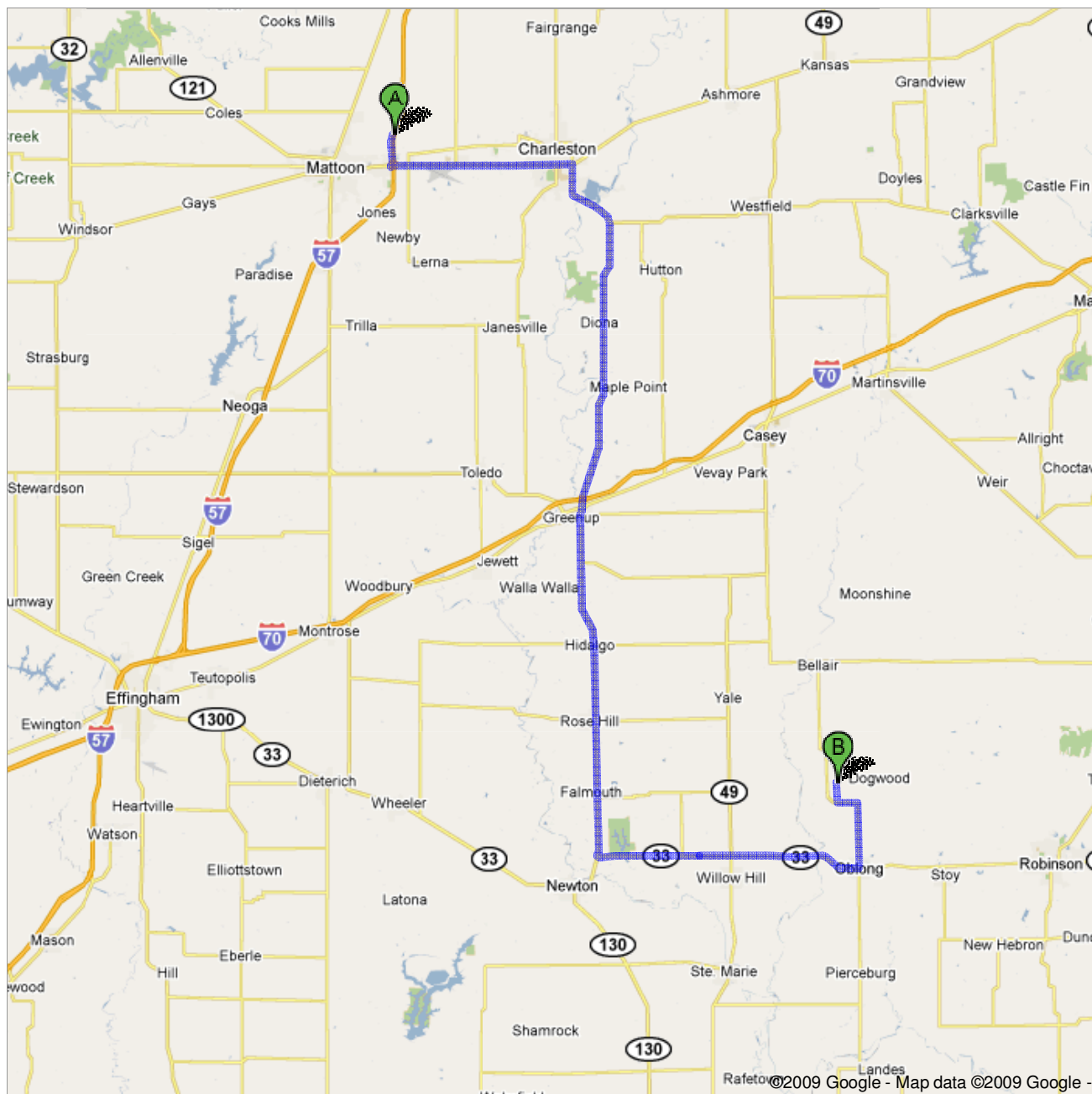
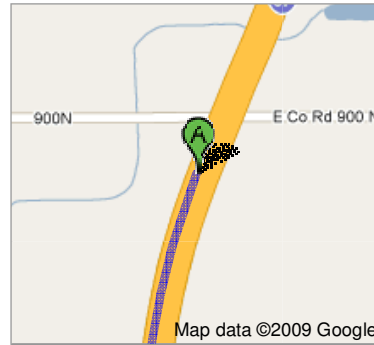




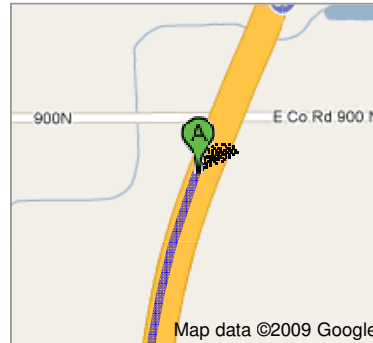
Directions to 14437 N 100th St, Oblong, IL 62449
62.2 mi – about 1 hour 40 mins

Save trees. Go green!
Download Google Maps on your phone at google.com/gmm





1. Head **south** on **I-57 S**
About 1 min



go 1.5 mi
total 1.5 mi



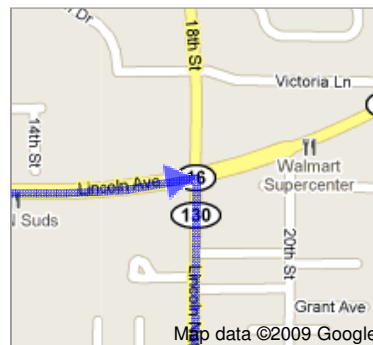
2. Take exit **190A** to merge onto **IL-16 E** toward **Charleston**
About 14 mins



go 8.8 mi
total 10.3 mi



3. Turn **right** at **18th St/IL-130 S**
Continue to follow IL-130 S
About 54 mins



go 34.2 mi
total 44.5 mi



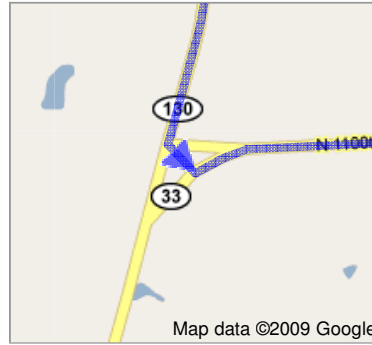
4. Turn **left** at **N 1100th Ave/IL-33**



go 276 ft
total 44.5 mi



5. Turn **left** at **N 1100th Ave/IL-33**
Continue to follow IL-33
About 21 mins



go 12.6 mi
total 57.1 mi



6. Turn **left** at **N Range St**
About 1 min



go 0.5 mi
total 57.6 mi

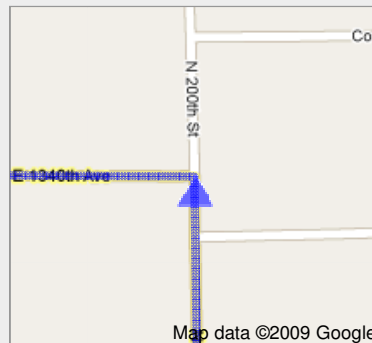
7. Continue onto **N 200th St**
About 5 mins



go 2.6 mi
total 60.2 mi



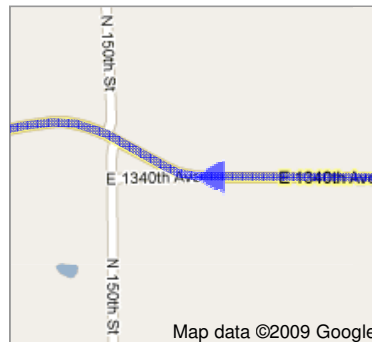
8. Turn **left** at **E 1340th Ave**
About 1 min



go 0.4 mi
total 60.6 mi



9. Slight **right** at **1340N/Co Hwy 14**
Continue to follow Co Hwy 14



go 0.1 mi
total 60.7 mi

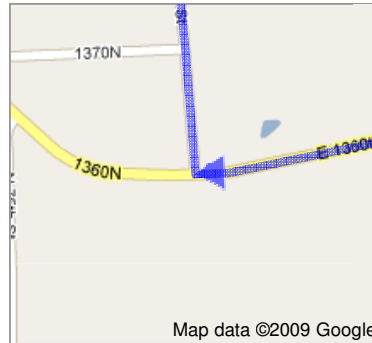
10. Continue onto **E 1360th Ave**
About 1 min

go 0.5 mi
total 61.2 mi

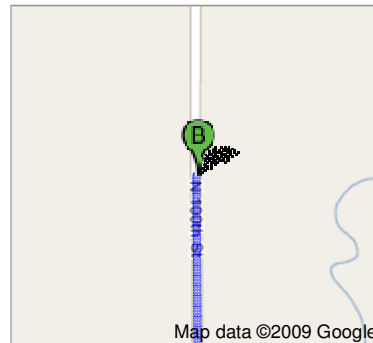


11. Turn **right** at **N 100th St**
Destination will be on the right
About 3 mins

go 1.0 mi
total 62.2 mi



14437 N 100th St, Oblong, IL 62449



These directions are for planning purposes only. You may find that construction projects, traffic, weather, or other events may cause conditions to differ from the map results, and you should plan your route accordingly. You must obey all signs or notices regarding your route.

Map data ©2009 , Google

Directions weren't right? Please find your route on www.google.com and click "Report a problem" at the bottom left.